



Making Silly Sheep

With

Betsy Mack

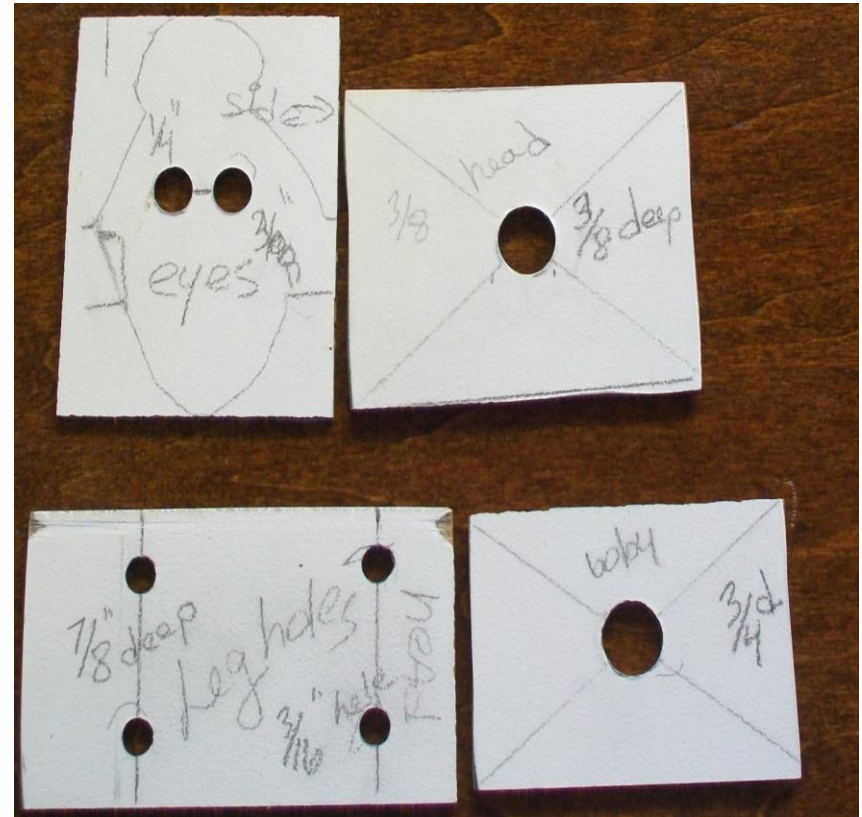


Materials & Tools

- 1" & 1 1/4" thick basswood
- 3/8" diameter dowel
- 2 1/8" (4) natural golf tees
- 1/4" (6mm) (2) diameter wooden balls
- Drill & bits
- Carving knife, gouge, "V" tool & glove
- Paint

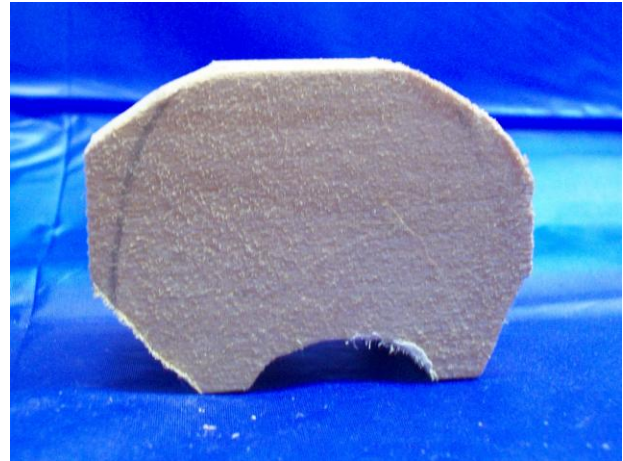
Drill the Body

- Cut out 1 ½" X 2 ¾" block of basswood
- Making more than 1 sheep, save time with a template for drilling. 2 for body; 2 for head
- **Drill holes while block is still a rectangle**
- 3/8" hole for the neck
- 3/16" holes for the legs



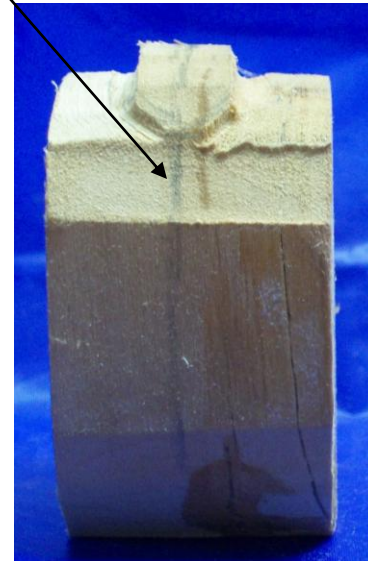
Cut Out the Body Profile

- Band saw with $\frac{1}{4}$ " blade works fine
- Scroll saw with #5 skip tooth works well too (better for head)



Body: Carve the Tail

- Draw in centerline
- Use the pattern to sketch out tail.
- Use “V” tool to raise it
- Clean up with a knife



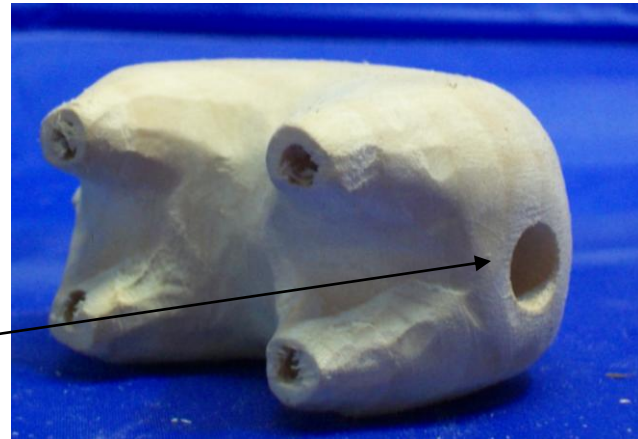
Body: Round It Up

- Remove the sharp corners
- Round around leg holes. Be careful not to break through the leg holes. Wood putty will solve it if you do.



Body: Keep Rounding

- Round around the neck, but not to close or the dowel will show
- Leave a flat spot around the hole
- Put in the neck dowel, no glue yet



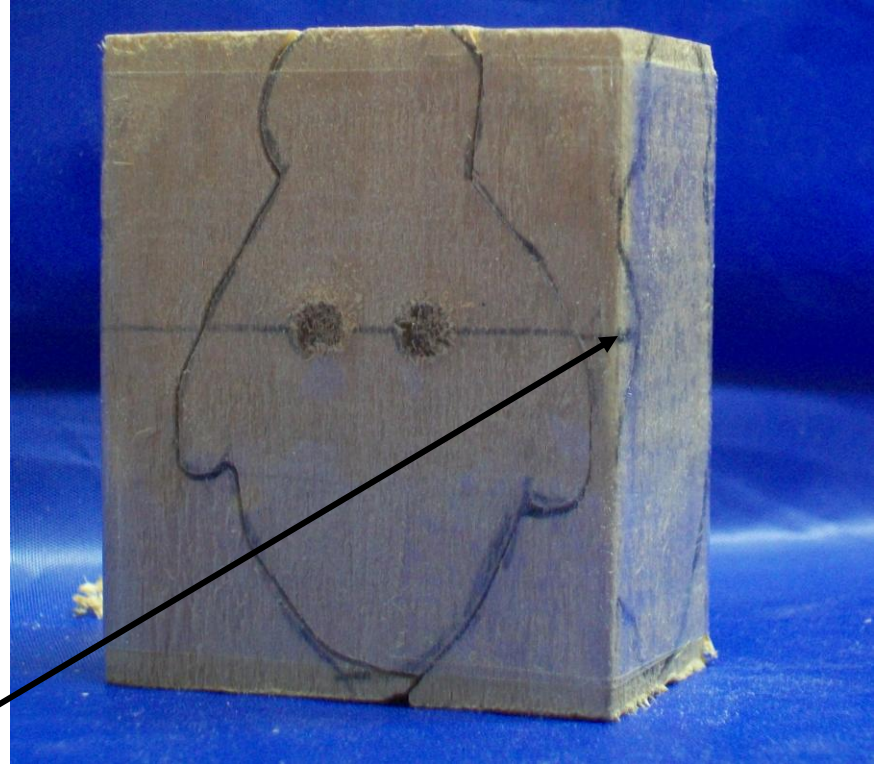
Body: Texture

- Carve a series of divots with a 1/4" gouge.
- Keep them close together & random
- A power carver with a ball bit works great here too. Dust collection is a must.



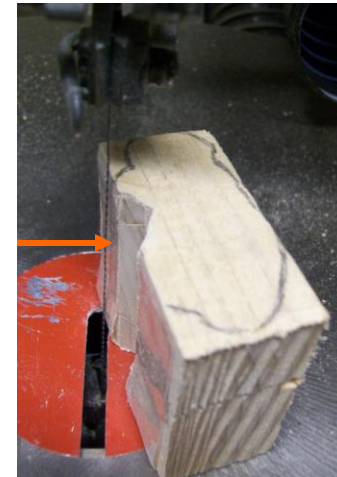
Head: Drill

- Drill a 3/8" hole for the neck dowel
- Drill 1/4" hole for the eyes. Make it deeper than you think
- Trace the front & side view patterns onto the blank. Line up the eyes with the groove



Head: Cutting out

- Scroll Saw out the blank. Try to keep it in one piece
- Tape the waste back on.
- Turn the blank 90° & cut out the eye groove
- Finish cutting out the shape
- Can be done with a bandsaw with a 1/4" blade, but harder



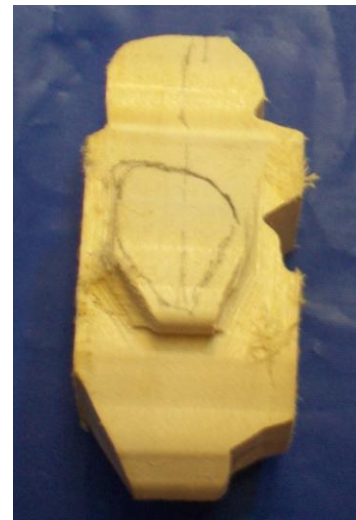
Head: Blank Done

- Mark out the center
- Mark out mouth & nostrils
- Mark out the ears



Head: Ears

- Remove the waste wood
- Round up the ears



Head: Ball

- Shape the ball on top of the head with a carving knife
- Texture the ball using small gouge to make the divots or a power carver with a small ball bit or wait & do it later with the body



Head: Round

- Round up the head
- Remove all sharp corners from the head
- Leave a small flat area around the dowel hole.
- Dry fit to the body; make sure the dowel doesn't show



Head: Mouth & Nostrils

- Sketch in the mouth & nostrils.
- Stop cut along the mouth line; Carve up to the stop cut to make the bottom lip
- Nostrils are carved with a 1/8" gouge



Sheep: Assembling & Finishing

- Glue wooden balls into the eye sockets
- Dry fit golf tee into the leg holes. Glue when level
- Glue in neck dowel, glue on the head
- Paint white, eyes blue & seal with clear lacquer



Sheep Finished
Now Make a
Whole Flock

SHEEP

THE



END